

Canon

imagePROGRAF

 imagePROGRAF
iPF9400S/8400S/6400S



PRODUCTION

LARGE-FORMAT PRINTING





A Powerful trio: color, control, and speed

Advanced printing solutions ideal for bringing production, signage/commercial photography, and proofing businesses to the next level of color.

Built for unmatched productivity and color consistency, the 60" imagePROGRAF iPF9400S, 44" imagePROGRAF iPF8400S, and 24" iPF6400S printers are ideal for those looking to advance in the commercial photography, signage display, and retail industries. Offering a 24" - 60" printer line-up, Canon technology will help you reach a whole new level of color management and uniformity across all the imagePROGRAF iPFx400S Series printers. And with the ability to add the SU-21 Spectrophotometer onto the iPF6400S printer, you can bolster color consistency in ways you never thought possible across your entire fleet of iPFx400S Series printers.

FEATURES

- **8-color LUCIA EX ink set** is formulated for sophisticated photographic expression with its brilliant range of vibrant colors, smooth gradations, and incredibly fine details.
- Optional SU-21 Spectrophotometer for the iPF6400S provides the ability for **advanced color management and color consistency** across the entire line of iPFx400S printers.
- Color Calibration Management Console provides **centralized color management** in multiprinter production environments.
- A new Multi-Sensor **helps improve density detection accuracy** over previous models.
- Fast and Economy print modes produce high-speed output that help **lower print costs**.
- Sub-ink tank system and high-capacity ink tanks for **continuous printing**.
- A library of software solutions is included, such as PosterArtist Lite* for **easy poster creation** and Accounting Manager to help **calculate and track print jobs**.

*Included with iPF6400S and iPF8400S. PC only.

imagePROGRAF

WHAT'S NEW

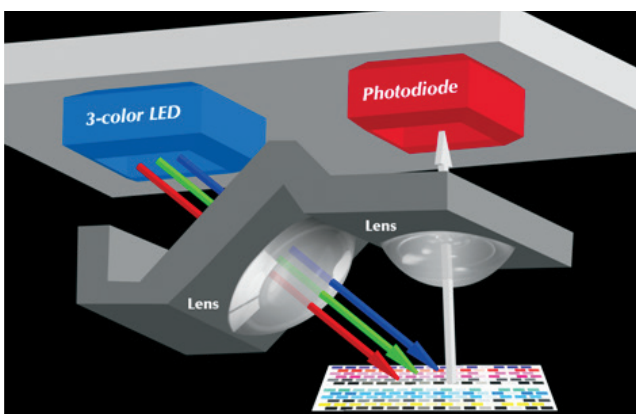
From 24" to 60", the Canon imagePROGRAF iPFx400S Series of printers shares the same technology, making it a truly uniform solution for large-format production printing.

FLEET MANAGEMENT

With the introduction of the SU-21 Spectrophotometer and the Color Calibration Management Console to the imagePROGRAF S Series printers, you can achieve color management and control from a centralized location, streamlining your workflow like never before. Create calibration files using the SU-21 Spectrophotometer and share them across a fleet of iPFx400S Series printers for unbelievable control.

MULTI-SENSOR

The enhanced multi-sensor featured in the iPFx400S Series of printers helps improve density detection accuracy as compared to the previous line of iPF S Series printers. Along with the included software solutions, the new multi-sensor helps achieve color consistency across all the new iPF 8-color models.



SU-21 SPECTROPHOTOMETER

The optional SU-21 Spectrophotometer for the iPF6400S printer provides the foundation for advanced color management and remarkable color consistency.

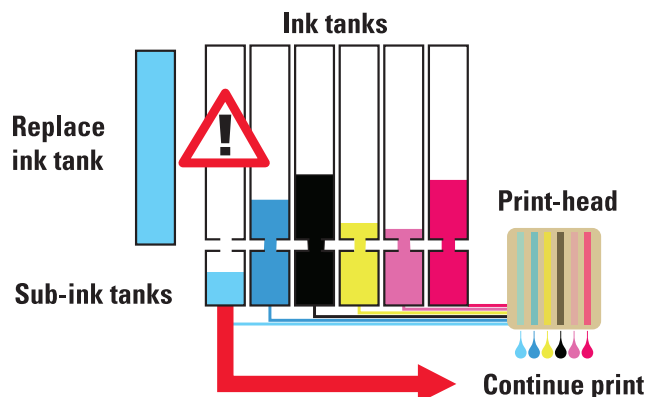
SOFTWARE SOLUTIONS

Introducing three exciting software solutions:

- **Color Calibration Management Console** helps centralize and maintain an efficient color management system;
- An enhanced **Print Plug-in for Adobe® Photoshop®**, which hosts a Gallery Wrap Feature for creating canvas wraps; and,
- **Direct Print & Share**, Canon's cloud-based portal solution for sharing files.

LARGE-CAPACITY INK TANKS WITH A SUB-INK TANK SYSTEM

The 24" iPF6400S printer now has the capability to utilize 300ml ink tanks, which is more than double the capacity of the standard 130ml ink tanks. The 44" iPF8400S and 60" iPF9400S printers have an option for 330ml and 700ml tanks! The sub-ink tank system, available for the first time on a 24" 8-color printer, gives the user the ability to change ink tanks on the fly, without stopping the print run.



CENTRALIZED COLOR MANAGEMENT IN MULTIPRINTER PRODUCTION ENVIRONMENTS

With the addition of the iPF8400S and iPF6400S printers to the iPF9400S printer, the imagePROGRAF iPFx400S Series allows for color management and consistency, without sacrificing speed. For the first time on an S Series printer, you have the ability to create custom color profiles using the iPF6400S printer with the optional SU-21 Spectrophotometer, and these profiles can be shared across any other iPFx400S Series printer in your fleet. These new features help you stabilize color accuracy across the entire workflow, while providing consistency across all iPFx400S Series devices to help ensure the correct print comes out every time.

Canon provides a variety of features designed specifically to improve access, administration, and operation of a fleet of printers. These features include:

- **Color Calibration Management Console**
- **Built-in Multi-Sensor**
- **Optional SU-21 Spectrophotometer**

OPTIONAL SU-21 SPECTROPHOTOMETER FOR iPF6400S PRINTER

This easily installable solution attaches directly onto the front of the iPF6400S printer and provides the foundation for advanced color management across all iPFx400S Series printers.

The SU-21 Spectrophotometer device includes:

- A fully automated **mobile carriage** for the sensor, allowing for media of different thicknesses to be loaded and used with the device.
- A **single-piece**, user-switchable backing plate that contains both white and black backings, unique to Canon's solution.
- User-switchable **UV blocking filter** that can be switched on or off according to paper type, eliminating the need to purchase individual sensors for each stock.
- Scan speed of **up to 10 inches per second**.
- The ability to generate color calibration charts using non Canon branded media—allowing users to expand their workflow options.

Execute right from your own desk.



Administrator

COLOR CALIBRATION MANAGEMENT CONSOLE

The Color Calibration Management Console (CCMC) allows for centralized management of all networked iPFx400S Series printers in a single system, from one easy-to-use software tool. This unique feature enables color calibration targets created using the iPF6400S printer with the optional SU-21 Spectrophotometer to be linked across the entire line of 8-color imagePROGRAF iPF printers in your fleet. The administrator can then monitor and manage each printer from a remote location, from almost anywhere in the world! * **Linking color calibration** targets among multiple printers allows for color calibration of custom media to be performed on any iPFx400S Series printer, whether or not it's equipped with an SU-21 Spectrophotometer.

BUILT-IN MULTI-SENSOR

Designed to support precise calibration and color matching, the multi-sensor uses a three-color LED and an enhanced condenser lens. The sensor enables accurate recalibration of the device.

* You must open a Google Cloud account to take advantage of the cloud functionality. Storage capacity and any pricing thereof is based on Google's current offering and is at Google's discretion. Your Google Cloud account is subject to Google's terms and conditions, which is subject to change at Google's discretion. Neither Canon, Inc. nor Canon U.S.A., Inc. represents or warrants any third-party product, service, or feature referenced hereunder.

BORDERLESS PRINTING

All iPFx400S Series printers feature true borderless printing, helping to reduce the requirements needed for trimming and off-line finishing. This also makes the iPF9400S the only 60" large-format printer to accommodate true 60" borderless printing.

FAST AND ECONOMY PRINT MODES

Canon's Fast Print mode helps you minimize your per-print cost by producing 1200 x 1200 dpi output while reducing total ink consumption by 10% to 20%.** And for quick check plots, utilize the Fast Print mode with the Economy Printing option to help reduce total ink consumption by up to 50%** on select media!

HIGH-CAPACITY INK SYSTEM WITH SUB-INK TANKS

The iPFx400S Series printers feature a large ink tank capacity of 130ml or 300ml for the iPF6400S printer and 330ml or 700ml for the iPF8400S and iPF9400S printers. The sub-ink tank system enables ink tanks to be replaced on the fly, without stopping the printer.

**When compared to Standard mode.





SOFTWARE

Canon includes innovative software that will help you to expand your creative process as well as manage your printing process, resulting in beautiful output with an eye on the bottom line.

- **Color Calibration Management Console:**

This program allows for the **centralized color management** of networked printers in a system, letting users manage, share, and link their color data. This helps ensure color consistency between printers within a series.

- **PosterArtist Lite:***† Use this template-driven, poster-creation software to develop professional posters, banners, and signage in just four easy steps! And to expand your poster-creation workflow even further, a full version of **PosterArtist** is available for purchase.

- **Direct Print & Share:** Canon's cloud-based portal solution allows you to upload and download your files from almost anywhere in the world!††

- **Print Plug-in for Adobe Photoshop:** This expands creative and processing options for the photographic professional, for higher-quality levels than what's offered by the traditional printer driver.

- **imagePROGRAF Layout Plug-in:** This Plug-in can be accessed via Adobe Photoshop and gives users the ability to easily create **gallery wrap** prints for framing. It also includes a host of creative options that expands output possibilities.

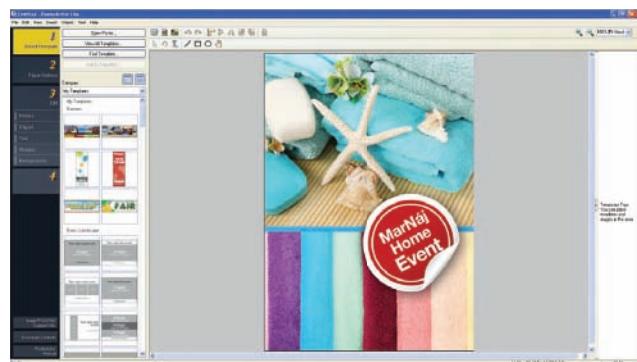
- **Accounting Manager:*** Allows you to track and calculate your printing costs to help minimize waste and maximize profits.

- **Print Plug-in for Microsoft® Office:** Print posters, spreadsheets, and banners quickly and easily directly from Microsoft Excel®, PowerPoint®, and Word applications.

- **Free Layout Tool:** This gives the ability to group and print files from different applications as a single job, and then edit the placement and scaling of the output directly from the Printer Driver.

- **Media Configuration Tool:** This tool allows for new Canon and custom media profiles to be imported into the printer, giving you more flexibility in their media choices.

- **Remote User Interface:** This offers the ability to remotely access your imagePROGRAF printer and receive any notifications as well as check on the printer's status.



* PC only.

† Included with the iPF8400S and iPF6400S models.

†† You must open a Google Cloud account to take advantage of the cloud functionality. Storage capacity and any pricing thereof is based on Google's current offering and is at Google's discretion. Your Google Cloud account is subject to Google's terms and conditions, which is subject to change at Google's discretion. Neither Canon, Inc. nor Canon U.S.A., Inc. represents or warrants any third-party product, service, or feature referenced hereunder.

imagePROGRAF

SPECIFICATIONS



Print-Heads

PF-05 (2)

Technology

FINE (Full-photolithography Inkjet Nozzle Engineering)

Print Resolution (Max.)

Up to 2400 x 1200 dpi

Ink Type

LUCIA EX Ink (Pigment-based)

Ink Tank

PFI-106 (130ml): BK, MBK, C, M, Y, PC,
PM, GY
PFI-206 (300ml): BK, MBK, C, M, Y, PC,
PM, GY

Colors

Cyan, Photo Cyan, Magenta, Photo Magenta,
Yellow, Black, Matte Black, Gray

Ink Tank Shipped with Printer

8 Colors (90ml Starter Tank, BK, MBK, M, Y)
(120ml Starter Tank C, PC, PM, GY)

Hard Disk Capacity

250GB

Printer Memory

256MB

Media Feed

Top-loading Roll Feed

One Roll, Front Output

Top-loading Manual Feed

One Sheet, Front Output

Front-loading Manual Feed

One Sheet, Front Output

Media Width

8" - 24" (Cut Sheet and Roll)

Minimum Media Length

Top-loading Roll Feed

8" (203mm)

Top-loading Manual Feed

11.0" (279mm)

Front-loading Manual Feed

13.8" (350mm)

Maximum Print Length

Manual Feed

63" (1.6m)

Roll Feed

59' (18m)*

Front-loading Manual Feed

36" (914mm)

Borderless Printing Widths (Roll Media Only)

10"/14"/16"/17"/24"/B4 [9.84"(250mm)]/
A2 [16.54"(420mm)]/ B2 [20.28"(515mm)]/
A1 [23.38"(594mm)]

Printer Stand

Standard

Media Thickness

Top-loading Manual Feed

0.07mm - 0.8mm (2.8mil - 31.4mil)

Front-loading Manual Feed

0.5mm - 1.5mm (19.6mil - 59.0mil)

Top-loading Roll Feed

0.07mm - 0.8mm (2.8mil - 31.4mil)

Media Core Sizes

2" or 3" Core (with Supplied Adapter)

Printable Margins

Manual Feed (Top/Front)

Leading and Left/Right Edges: 0.12" (3mm)
Trailing Edge, Front Feed: 0.90" (23mm)
Trailing Edge, Top Feed: 0.12" (3mm) Except
Art Paper 0.90" (23mm)
Roll Feed, All Sides: 0.12" (3mm) or 0" for Borderless

Maximum Media Roll Outer Diameter

5.9" (150mm)

Bundled Software

Printing Software

Canon Printer Driver, Print Plug-in for Photoshop,**
Print Plug-in for DPP,*** Printer Driver Extra Kit
(Free Layout, imageRUNNER Linking Function),
Print Plug-in for Microsoft Office, Optimized Module
for AutoCAD

Applications

PosterArtist Lite

Utilities

imagePROGRAF Status Monitor (Windows®),
Print Monitor (Macintosh®), Media Configuration
Tool, Remote UI, Accounting Manager,
Color Calibration Management Console,
Direct Print & Share

Printer Language

GARO (Canon Proprietary)

Operating System*

Windows XP (32/64-bit), Server 2003 (32/64-bit),
Server 2008 (32/64-bit), Windows Vista® (32/64-bit),
Windows 7 (32/64-bit); Windows 8 (32/64-bit);
Macintosh OS X 10.5.8 - 10.7x

Interface

Standard

USB 2.0 High-Speed
10/100/1000Base-T/TX

Acoustic Noise

Operation 47dB or Less

Power Supply

AC 100-240V (50-60Hz)

Power Consumption

Maximum

100W or Less

Standby (100-120V)

5W or Less

Power Off

.5W or Less (compliant with executive order)

Certifications

UL, FCC Class B, ENERGY STAR®

Operational Environment

Temperature

59 - 86 F° (15 - 30 C°)

Relative Humidity

10 - 80% (No Condensation)

Dimensions

Printer and Stand (H x W x D)

39.4" x 48.3" x 29.6"

Printer with optional SU-21 Spectrophotometer

installed (H x W x D)

39.4" x 48.3" x 34.4"

Weight

Printer

Approx. 154 lb.

Printer with optional SU-21 Spectrophotometer installed

Approx. 200 lb.

User-Replaceable Items

Print-Head (PF-05)

Maintenance Cartridge (MC-16)

Options

Roll Holder Set RH-25

PosterArtist (PC Only)

Optional SU-21 Spectrophotometer

Model

X-Rite SU-21

Color Measurement Width

480mm

Max. Media Thickness

0.50mm

XRGA Compliant

Yes

ISO13655 Compliant

Yes

User Switchable UV Filter

Yes

White/Black Backing

Included on One Strip

Support for Third-party RIPs

Most Leading Third-party RIPs

* The maximum printable length varies depending on the application, OS, and RIP used. The maximum printable length from Canon Printer Driver is 50 feet.

** For Adobe Photoshop 6, 7, CS, CS2, CS3, CS4 running on Windows 2000/XP/Windows Vista (32 bit)/Windows 7/Windows 8, or Macintosh OS X 10.2/10.3/10.4/10.5/10.6.

*** For Digital Photo Professional version 2.1 or later running on Windows 2000/XP/Windows Vista (32 bit)/Windows 7/Windows 8, or Macintosh OS X 10.2/10.3/10.4/10.5/10.6.

■ For imagePROGRAF Printer Driver. For printing from PostScript® applications such as Adobe Illustrator® or QuarkXPress®, please use a PostScript compatible RIP package. For a list of Canon recommended RIP packages, please consult with Canon Alliance and Industry Market program list of RIP vendors.

imagePROGRAF

SPECIFICATIONS



Print-Heads

PF-05 (2)

Technology

FINE (Full-photolithography Inkjet Nozzle Engineering)

Print Resolution (Max.)

Up to 2400 x 1200 dpi

Ink Type

LUCIA EX Ink (Pigment-based)

Ink Tank

PFI-306 (330ml): BK, MBK, C, M, Y, PC, PM, GY
PFI-706 (700ml): BK, MBK, C, M, Y, PC, PM, GY

Colors

Cyan, Photo Cyan, Magenta, Photo Magenta, Yellow, Black, Matte Black, Gray

Ink Tank Shipped with Printer

8 Colors (Full 330ml Each Color)

Hard Disk Capacity

250GB

Printer Memory

iPF9400S

640MB

iPF8400S

384MB

Media Feed

Front-loading Roll Feed

One Roll, Front Output

Front-loading Manual Feed

One Sheet, Front Output

Media Width

iPF9400S

Cut Sheet: 8" – 60"
Roll Feed: 10" – 60"

iPF8400S

Cut Sheet: 8" – 44"
Roll Feed: 10" – 44"

Minimum Media Length

8" (203mm)

Maximum Print Length

Manual Feed

5.2' (1.6m)

Roll Feed

59' (18m)*

Borderless Printing Widths (Roll Media Only)

iPF9400S

10"/14"/17"/24"/36"/42"/44"/50"/60/
B2 [20.28"(565mm)]/A1 [23.38"(594mm)]/
A0 [33.11"/841mm]/B0 [40.55"(1030mm)]

iPF8400S

10"/14"/17"/24"/36"/42"/44"/B2 [20.28"(565mm)]/
A1 [23.38"(594mm)]/ A0 [33.11"/841mm]/
B0 [40.55"(1030mm)]

Printer Stand

Standard

Media Thickness

Front-loading Manual Feed

0.07mm - 0.8mm (2.8mil - 31.4mil)

Front-loading Roll Feed

0.07mm - 0.8mm (2.8mil - 31.4mil)

Media Core Sizes

2" or 3" Core (with Supplied Adapter)

Printable Margins

Manual Feed (Front)

Leading and Left/Right Edges: 0.20" (5mm)
Trailing Edge: 0.90" (23mm)

Roll Feed

All Sides: 0.20" (5mm) or 0" for Borderless

Maximum Media Roll Outer Diameter

5.9" (150mm)

Bundled Software

Printing Software

Canon Printer Driver, Print Plug-in for Photoshop,**
Print Plug-in for DPP,*** Printer Driver Extra Kit
(Free Layout, imageRUNNER Linking Function), Print
Plug-in for Microsoft Office, Optimized Module for
AutoCAD

Applications

PosterArtist Lite (iPF8400S only)

Utilities

imagePROGRAF Status Monitor (Windows®),
Print Monitor (Macintosh®), Media Configuration
Tool, Remote UI, Accounting Manager, Color
Calibration Management Console, Direct Print & Share

Printer Language

GARO (Canon Proprietary)

Operating System*

Windows XP (32/64-bit), Server 2003 (32/64-bit),
Server 2008 (32/64-bit), Windows Vista (32/64-bit),
Windows 7 (32/64-bit); Windows 8 (32/64-bit);
Macintosh OS X 10.5.8 - 10.7.x

Interface

Standard

USB 2.0 High-Speed
10/100/1000Base-T/TX

Acoustic Noise

iPF9400S: Operation 68dB or Less

iPF8400S: Operation 50dB or Less

Power Supply

AC 100-240V (50-60Hz)

Power Consumption

Maximum

190W or Less

Standby (100-120V)

5W or Less

Power Off

.5W or Less (compliant with
executive order)

Certifications

UL, FCC Class B, ENERGY STAR

Operational Environment

Temperature

59 – 86 F° (15 – 30 C°)

Relative Humidity

10 – 80% (No Condensation)

Dimensions with Stand (H x W x D)

iPF9400S: 45" x 90.5" x 30.2"

iPF8400S: 45" x 74.5" x 38.4"

Weight

iPF9400S: Approx. 355 lb.

iPF8400S: Approx. 315 lb.

User-Replaceable Items

Print-Head (PF-05)

Maintenance Cartridge (MC-08)

Options

iPF9400S

Roll Holder Set RH2-63

BU-01 Basket

PosterArtist (PC only)

iPF8400S

Roll Holder Set RH2-44

Take Up Unit TU-06

PosterArtist (PC only)

* The maximum printable length varies depending on the application, OS, and RIP used. The maximum printable length from Canon Printer Driver is 50 feet.

** For Adobe Photoshop 6, 7, CS, CS2, CS3, CS4, CS5, CS6 running on Windows 2000/XP/Windows Vista (32 bit)/Windows 7/Windows 8, or Macintosh OS X 10.2/10.3/10.4/10.5/10.6.

*** For Digital Photo Professional version 2.1 or later running on Windows 2000/XP/Windows Vista (32 bit)/Windows 7/Windows 8, or Macintosh OS X 10.2/10.3/10.4/10.5/10.6.

■ For imagePROGRAF Printer Driver. For printing from PostScript applications such as Adobe Illustrator or QuarkXPress, please use a PostScript compatible RIP package. For a list of Canon recommended RIP packages, please consult with Canon Alliance and Industry Market program list of RIP vendors.

Canon

1-800-OK-CANON

www.usa.canon.com

Canon U.S.A., Inc.
One Canon Park
Melville, NY 11747

As an ENERGY STAR Partner, Canon U.S.A., Inc. has qualified this model as meeting the ENERGY STAR energy efficiency criteria through an EPA recognized certification body. ENERGY STAR and the ENERGY STAR mark are registered U.S. marks. CANON, IMAGEPROGRAF, IMAGERUNNER, LUCIA, and the GENUINE logo are registered trademarks of Canon Inc. in the United States and may also be registered trademarks or trademarks in other countries. Google is a trademark and/or registered trademark of Google Inc. Microsoft is a registered trademark or trademark of Microsoft Corporation in the United States and other countries. All other referenced product names and marks are trademarks of their respective owners. Specifications and availability subject to change without notice. All output images and effects are simulated. Products not shown to scale. Not responsible for omissions or typographical errors. Weight and dimensions are approximate.
©2013 Canon U.S.A., Inc. All rights reserved.

0179W634

0913-iPFx400SBro-10M-LCR

